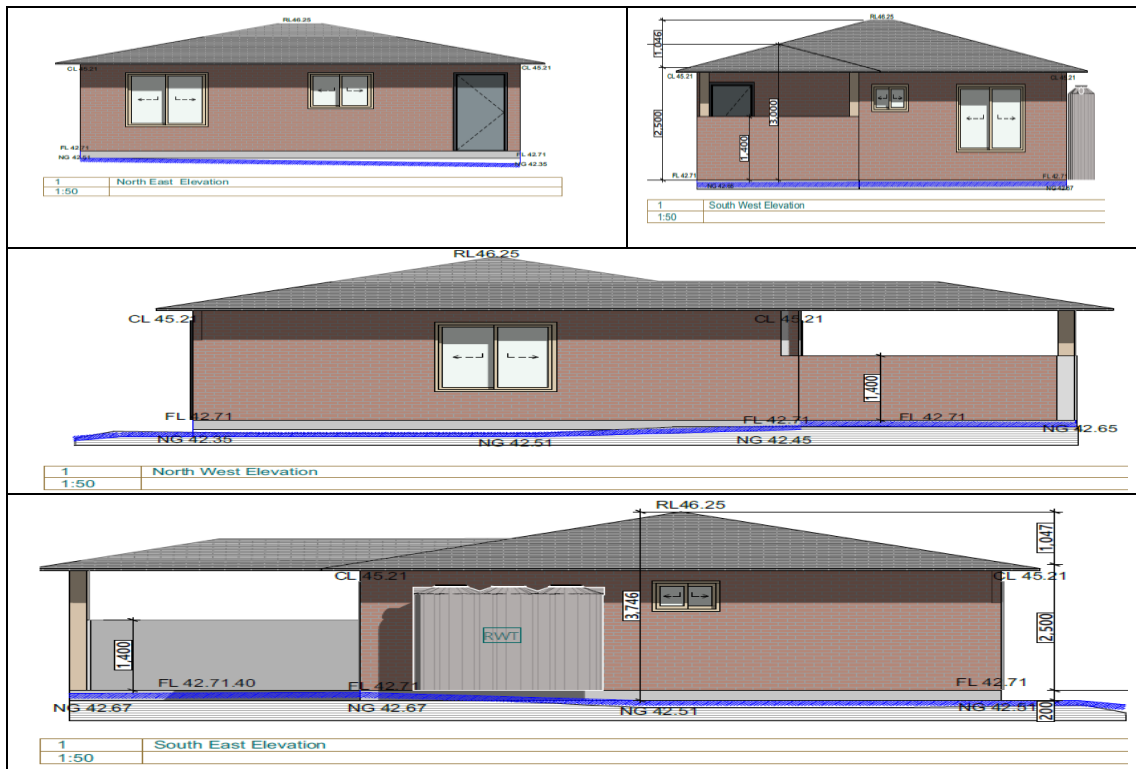
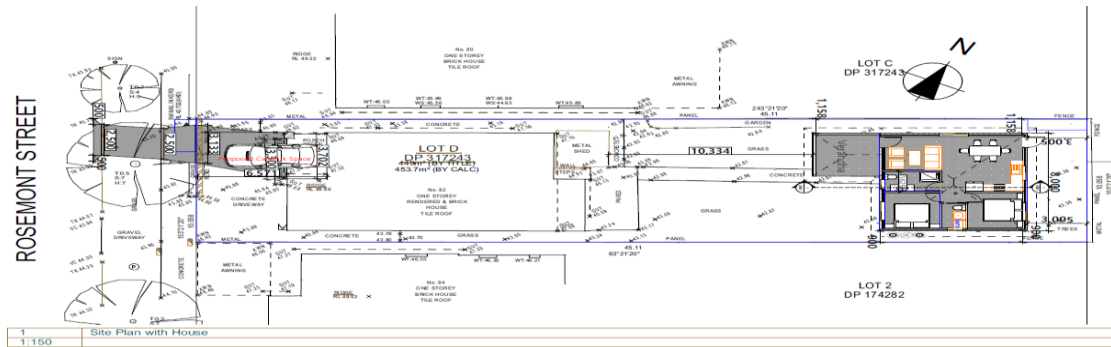


# Neighbour Notification

82 Rosemont Street Punchbowl NSW 2196



**Planning and Architecture Research for Sustainable Housing Integrity (PARSHI)**  
**Office Address**

Office2, Level 1, 208A Beamish St, Campsie, NSW 2194

Contact: Mob: 0425834402, ph 02 80331960

[www.parshi.com.au](http://www.parshi.com.au), Email: [Info@parshi.com](mailto:Info@parshi.com).